

低音革胡

《三寸金蓮》

(選自音樂劇《城寨風情》)

(中級)

中速 稍快 活潑 有趣地 ♩ = 102

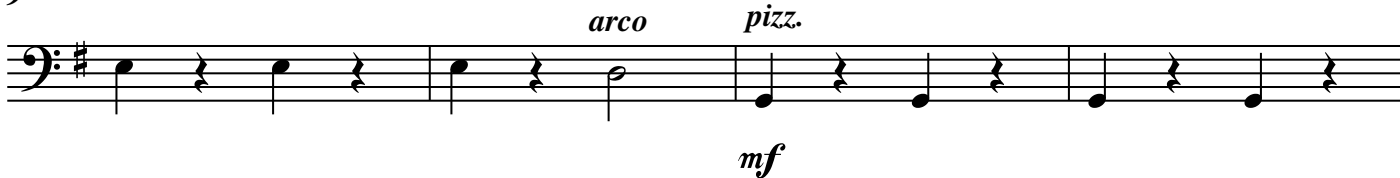
pizz.



5



9



13



17



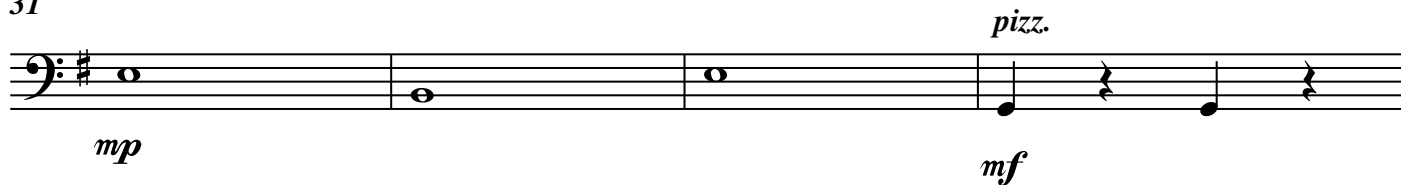
21



25



31



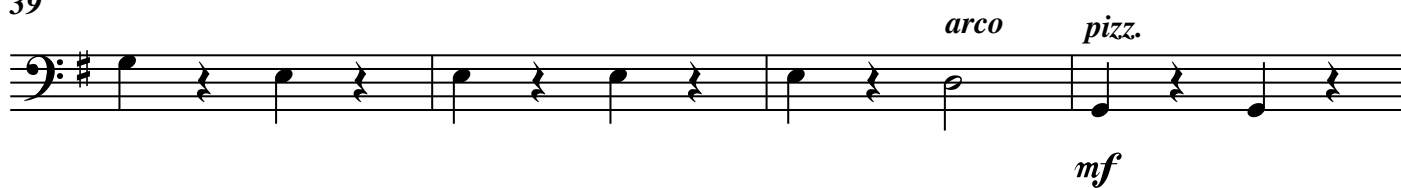
Measures 31-34: Bass clef, key signature of one sharp (F#). Measure 31: whole note G2. Measure 32: whole note G2. Measure 33: whole note G2. Measure 34: quarter note G2, quarter rest, quarter note G2, quarter rest. Dynamics: *mp* for measures 31-33, *mf* for measure 34. *pizz.* above measure 34.

35



Measures 35-38: Bass clef, key signature of one sharp (F#). Measure 35: quarter note G2, quarter rest, quarter note G2, quarter rest. Measure 36: quarter note G2, quarter rest, quarter note G2, quarter rest. Measure 37: quarter note G2, quarter rest, quarter note G2, quarter rest. Measure 38: quarter note G2, quarter rest, quarter note G2, quarter rest.

39




Measures 39-42: Bass clef, key signature of one sharp (F#). Measure 39: quarter note G2, quarter rest, quarter note G2, quarter rest. Measure 40: quarter note G2, quarter rest, quarter note G2, quarter rest. Measure 41: quarter note G2, quarter rest, quarter note G2, quarter rest. Measure 42: quarter note G2, quarter rest, quarter note G2, quarter rest. Dynamics: *mf* for measures 39-41, *mf* for measure 42. *arco* above measure 41, *pizz.* above measure 42.

43



Measures 43-46: Bass clef, key signature of one sharp (F#). Measure 43: quarter note G2, quarter rest, quarter note G2, quarter rest. Measure 44: quarter note G2, quarter rest, quarter note G2, quarter rest. Measure 45: quarter note G2, quarter rest, quarter note G2, quarter rest. Measure 46: quarter note G2, quarter rest, quarter note G2, quarter rest.

47



Measures 47-50: Bass clef, key signature of one sharp (F#). Measure 47: quarter note G2, quarter rest, quarter note G2, quarter rest. Measure 48: quarter note G2, quarter rest, quarter note G2, quarter rest. Measure 49: quarter note G2, quarter rest, quarter note G2, quarter rest. Measure 50: quarter note G2, quarter rest, quarter note G2, quarter rest. Dynamics: *arco* above measure 50.

51



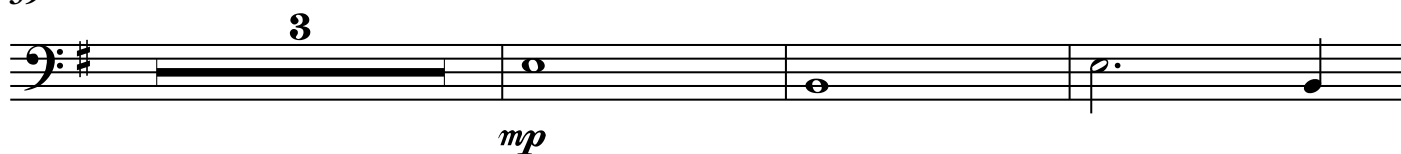
Measures 51-54: Bass clef, key signature of one sharp (F#). Measure 51: quarter note G2, quarter rest, quarter note G2, quarter rest. Measure 52: quarter note G2, quarter rest, quarter note G2, quarter rest. Measure 53: quarter note G2, quarter rest, quarter note G2, quarter rest. Measure 54: quarter note G2, quarter rest, quarter note G2, quarter rest.

55



Measures 55-58: Bass clef, key signature of one sharp (F#). Measure 55: quarter note G2, quarter rest, quarter note G2, quarter rest. Measure 56: quarter note G2, quarter rest, quarter note G2, quarter rest. Measure 57: quarter note G2, quarter rest, quarter note G2, quarter rest. Measure 58: quarter note G2, quarter rest, quarter note G2, quarter rest. A fermata is placed over the final quarter note of measure 58.

59



Measures 59-62: Bass clef, key signature of one sharp (F#). Measure 59: triplet of quarter notes G2, A2, B2. Measure 60: whole note G2. Measure 61: whole note G2. Measure 62: quarter note G2. Dynamics: *mp* for measures 60-62.

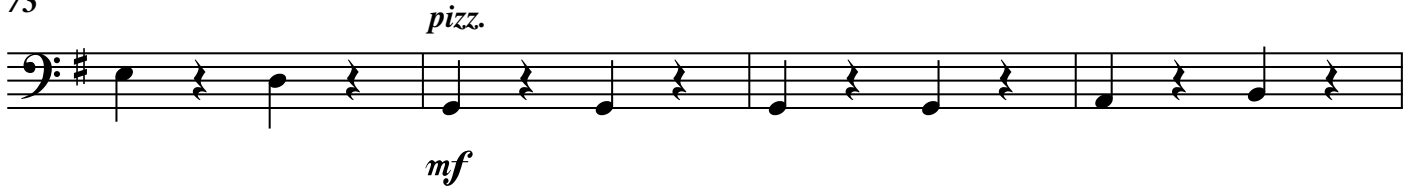
65



69



73



77



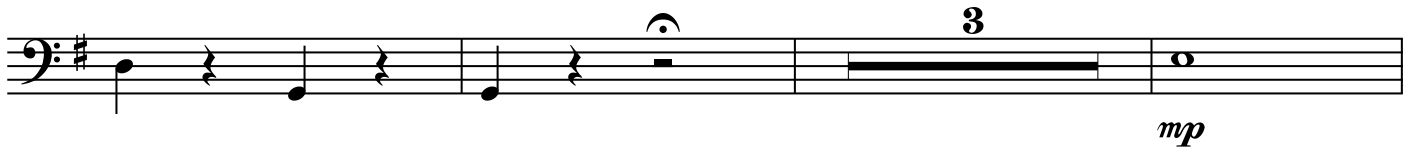
81



85



89



95

